

Tanques Criogénicos Verticales para Nitrógeno, Oxígeno y Argón

ARCOSA
TANK

Vertical Cryogenic Tanks for Nitrogen, Oxygen and Argon



CAPACIDAD NOMINAL / NOMINAL CAPACITY

DIMENSIONES EXTERIORES / DIMENSIONAL INFORMATION

Modelo Type	Volumen Total Gross Capacity		Volumen Neto Net Capacity		Diámetro Exterior Outside Diameter		Altura Total Overall Height		Peso Vacío Empty Weight		% Evaporación / día Daily Evaporation Rate
	Gal / Gall	Lts / Liters	Gal / Gall	Lts / Liters	Pulg / In	mm / mm	Pulg / In	mm / mm	Lbs / Pounds	Kg / Kg	
1500	1,612	6,101	1,531	5,796	74.5	1,892	194	4,928	7,597	3,446	0.35 LOX
3000	3,200	12,112	3,040	11,506	96	2,438	206	5,232	11,852	5,376	0.35 LOX
6000	6,015	22,767	5,774	21,856	96	2,438	331	8,407	18,349	8,323	0.25 LOX
9000	9,385	35,522	9,010	34,101	124	3,150	326	8,280	25,113	11,391	0.20 LOX
11000	11,391	43,115	10,935	41,390	124	3,150	380	9,652	28,784	13,056	0.20 LOX
13000	13,499	51,094	13,094	49,561	124	3,150	436	11,074	32,699	14,832	0.18 LOX
15000	15,601	59,050	15,133	57,278	124	3,150	494	12,548	39,001	17,695	0.18 LOX

MAWP = 250 PSI 17.58 Kg/cm²
MDMT = -320 °F -195.6 °C

Arcosa Industrias de México, S. de R.L. de C.V.
Monte Pelvoux 111 Piso 7 Col. Lomas de Chapultepec, C.P. 11000 México, D.F.
Tel: (52)-(55) 5201-7000 / LADA SIN COSTO: 01-800-715-93-45
www.tatsa.com.mx

Características Generales

General Specifications

CODIGO DE DISEÑO

Tanque interno diseñado de acuerdo a Código ASME Sección VIII, Div.1, última edición, y al Apéndice 44 "Cold stretching", Estampa "U".

Tanque Exterior diseñado de acuerdo a CGA-341, última edición (tanque no estampado).

MATERIALES

Tanque Interior : Acero Inoxidable, SA-240-T304, radiografiado 100%.
 Tubería Interior : Acero inoxidable, SA-312-304.
 Tanque Exterior : Acero al carbón, SA-36 / SA-285 C.
 Soportes : Acero al carbón, SA-36.
 Orejales de Izaje : Acero al carbón, SA-36.
 Tubería Exterior : Tubería de acero inoxidable, SA-312-304.
 Válvulas : En bronce, acero inoxidable
 Regulador de presión : Bronce.
 Elevo de presión : Vaporizador de Aluminio.

SISTEMA DE AISLAMIENTO

Super Aislamiento y vacío en espacio anular.

DESIGN

Inner Vessel designed according to ASME Code Sección VIII, latest Edition, and Appendix 44 "Cold stretching", "U" Stamp

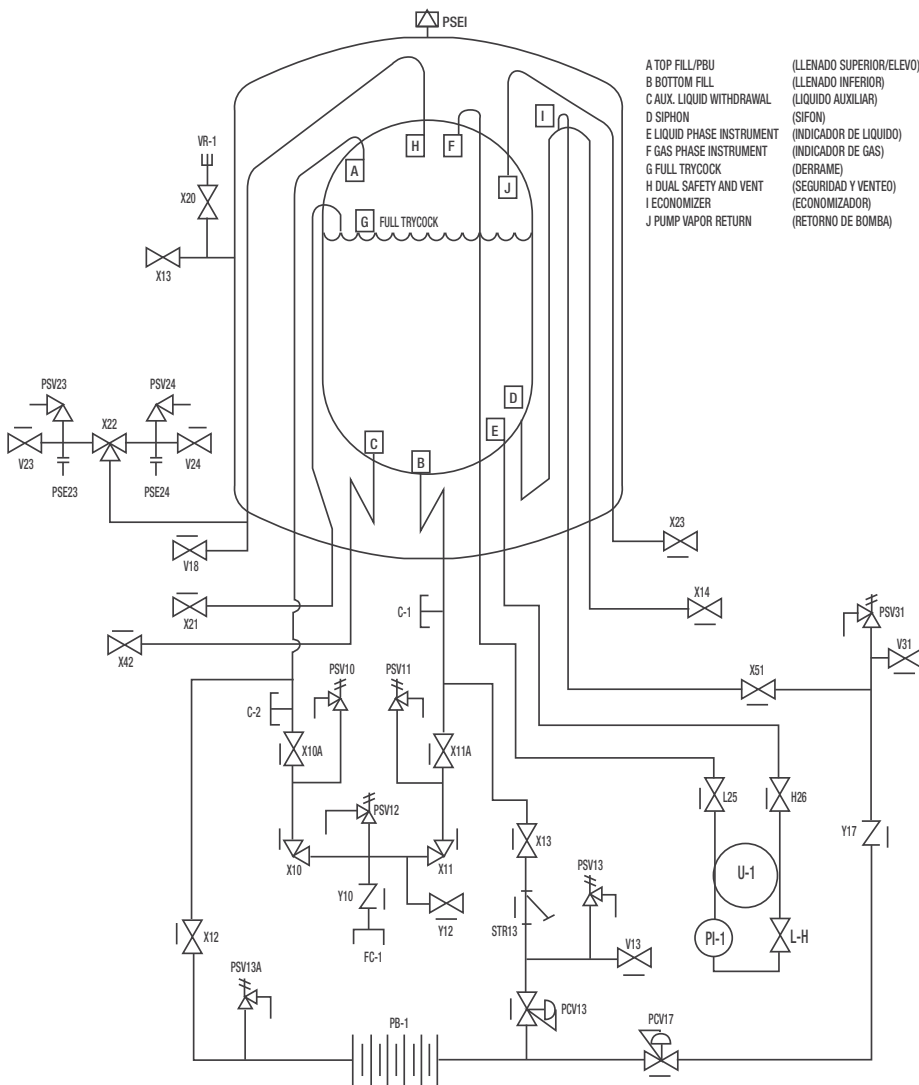
Outer jacket designed according to CGA-341 Pamphlet, latest edition (outer jacket non-stamped)

MATERIALS

Inner Vessel : Stainless steel, SA-240-T304, X-ray 100%.
 Stainless steel, SA-312-304.
 Outer Jacket : Carbon Steel, SA-36 / SA-285 C.
 Supports : Carbon Steel, SA-36.
 Lifting Lug : Carbon Steel, SA-36.
 External Piping : Stainless Steel, SA-312-304.
 Valves : Bronze, Stainless steel.
 Pressure Regulator : Bronze.
 Pressure Build-Up : Aluminium Vaporizer .

INSULATION SYSTEM

Multi-layer Insulation, and full vacuum.



ITEM	DESCRIPTION	QTY	SERVICE
FC-1	BRASS, PER CGA PAMPHLET V-6	01	FILL CONNECTION
X10	GLOBE VALVE ANGLE TYPE 1 1/2" NPS	01	TOP FILL VALVE
X10A	GLOBE VALVE, 1 1/2" NPS	01	TOP FILL VALVE
PSV10/11	THERMAL EXPANSION RELIEF VALVE, 1/4"NPS	02	FILL THERMAL RELIEF VALVE
X11	GLOBE VALVE ANGLE TYPE, 1 1/2" NPS	01	BOTTOM FILL VALVE
X11A	GLOBE VALVE , 1 1/2"NPS	01	BOTTOM FILL VALVE
PSV12	THERMAL EXPANSION RELIEF VALVE, 1/4"NPS	01	FILL THERMAL RELIEF VALVE
V12	GLOBE VALVE, 1/2" NPS	01	FILL LINE PURGE VALVE
X42	GLOBE VALVE, 1 1/2" NPS < 6000 GAL GLOBE VALVE, 2" NPS > 6000 GAL	01	AUXILIAR LIQUID VALVE
X14	GLOBE VALVE, 1" NPS < 6000 GAL GLOBE VALVE, 1 1/2" NPS > 6000 GAL	01	PRODUCT SUPPLY VALVE
H26	NEEDLE VALVE, 1/4" NPS	01	CONTENT GAUGE ISOLATION VALVE
L-H	NEEDLE VALVE, 1/4" NPS	01	EQUALIZER VALVE
L25	NEEDLE VALVE, 1/4" NPS	01	CONTENT GAUGE ISOLATION VALVE
LI-1	DIFFERENTIAL PRESSURE LEVEL INDICATOR	01	LEVEL INDICATOR, 6" DIAM. FACE
PI-1	PRESSURE INDICATOR, 2" FACE, 1/4" NPT	01	PRESSURE INDICATOR
V18	GLOBE VALVE, 1" NPS	01	TANK BLOWDOWN VALVE
X22	MULTIPOR DIVERTER VALVE, 1" NPS	01	DUAL SAFETY
PSV23	PRESSURE RELIEF VALVE, 3/4" X 1" NPS	01	INNER VESSEL PRESSURE RELIEF
PSE23	RUPTURE DISK, 3/4", SET 375 PSI AT 68°F	01	INNER VESSEL RUPTURE DISK
V23	NEEDLE VALVE, 1/4" NPS	01	RELIEF LINE PURGE VALVE
PSV24	PRESSURE RELIEF VALVE, 3/4" X 1" NPS	01	INNER VESSEL PRESSURE RELIEF
PSE24	RUPTURE DISK, 3/4", SET 375 PSI AT 68°F	01	INNER VESSEL RUPTURE DISK
V24	NEEDLE VALVE, 1/4" NPS	01	RELIEF LINE PURGE VALVE
X31	GLOBE VALVE, 1/2" NPS	01	ECONOMIZER ISOLATION VALVE
V31	PURGE VALVE, 1/4" NPS	01	LINE BLOCK PURGE ECONOMIZER VALVE
PSV31	THERMAL EXPANSION RELIEF VALVE, 1/4"NPS	01	ECONOMIZER THERMAL RELIEF VALVE
Y17	CHECK VALVE, 1/2" NPS	01	ECONOMIZER LINE CHECK VALVE
PCV17	BACK PRESSURE REGULATOR, 1/2" NPS	01	ECONOMIZER LINE BACK PRESSURE REGULATOR
PCV13	PRESSURE REGULATOR, 1/2" NPS	01	PB LINE, PRESSURE REGULATOR
X13	GLOBE VALVE, 1/2" NPS	01	PRESSURE BUILDING ISOLATION VALVE
STR13	STRAINER, 1/2" NPS, TYPE "Y"	01	PRESSURE BUILDING STRAINER
PSV13/A	THERMAL EXPANSION RELIEF VALVE, 1/4"NPS	02	PB THERMAL RELIEF VALVE
V13	PURGE VALVE, 1/4" NPS	01	LINE BLOCK PURGE PB VALVE
PB-1	PRESSURE BUILDING COIL, ALUMINIUM	01	PRUSSURE BUILD UP
X12	GLOBE VALVE, 1/2" NPS	01	PRESSURE BUILDING ISOLATION VALVE
X43	GLOBE VALVE, 1/2" NPS < 6000 GAL GLOBE VALVE, 1" NPS > 6000 GAL	01	PUMP VAPOR RETURN VALVE
X19	DIAPHRAGM VALVE, 1 1/2" NPS	01	VACUUM PUMP OUT VALVE
X20	BELLOWS GLOBE VALVE, 1/8" NPS	01	VACUUM PROBE ISOLATION VALVE
VR-1	VACUUM PROBE	01	VACUUM PROBE
PSE19	RELIEF DEVICE	01	VACUUM JACKET RELIEF DEVICE
Y10	CHECK VALVE, 1 1/2" NPS	01	FILL CONNECTION
X21	GLOBE VALVE, 1/2" NPS	01	FULL TRYCOCK
C-1	AUXILIAR LIQUID CONNECTION	01	AUXILIAR LIQUID CONNECTION
C-2	AUXILIAR GAS CONNECTION	01	AUXILIAR GAS CONNECTION

Última revisión: México, D.F. 14 de Febrero de 2019. Last Revision: Mexico, D.F. February 14th 2019.